



CANDIDATE PACK FOR CHAIR OF THE BOARD



WELCOME

Dear Applicant,

Thank you very much for your interest in becoming our next Chair.

This is a very special opportunity to lead the Board of a very special charitable Trust. Within the bounds of the Nene Trust's remit lies much of what can make life worth living.



It is both our mission and our pleasure to enable people to experience the natural world in all its wonder.

We work tirelessly to ensure that people can benefit their own health, wellbeing and development through the many spaces, activities and facilities that we have made available within our much-loved central resource, Nene Park.

Our work encompasses careful stewardship of the ecology of our beautiful resource; however it is used, whilst supporting our staff team to be the liveliest, most professional and creative they can be as they deliver educational, sporting and cultural activity throughout the year. All this backed of course through the pursuit of expert business planning designed to deliver quality, and financial stability.

As a Board and Executive Team, we look to the future, envisaging a Trust that widens its remit to work further afield, sharing good practice and building a reputation as a trail blazer in bringing nature and people together for the good of all.

We look for a Chair who 'gets' our vision and adds to it by bringing their own professional experience and personal passion and commitment to a highly professional Board and an Executive Team with an outstanding reputation.

The Board is committed to demonstrating good governance, whilst remaining efficient and fleet of foot in navigating the current uncertain and changing financial, social, and political environment.

For the right individual this role can be both an exciting, stimulating challenge and a continuing source of great satisfaction and reward.

If you believe you are this person, and can offer the skills, experience and approach we are looking for, we very much look forward to hearing from you.

Jackie Bland
Chair

Matthew Bradbury
Chief Executive



OUR DYNAMIC ORGANISATION: NENE PARK TRUST

Nene Park Trust, a registered charity, serves as the proud provider of Nene Park and an exciting and growing portfolio of other spaces, places and ground-breaking initiatives.

Established in 1988 with a mission to safeguard and nurture the park indefinitely, we take pride in running inspiring programmes that connect people meaningfully with nature, culture and heritage. We orchestrate park maintenance, coordinating a wide array of exciting events and activities, and manage a range of commercial properties within the Park - and well beyond. Our 'Roadmap to Impact' Business Plan is now well embedded.

In all we do, we set out to achieve a meaningful 'Double Bottom Line', balancing the real impact of our work with careful management of our resources and financial sustainability.

SOME QUICK STATS FOR 2023

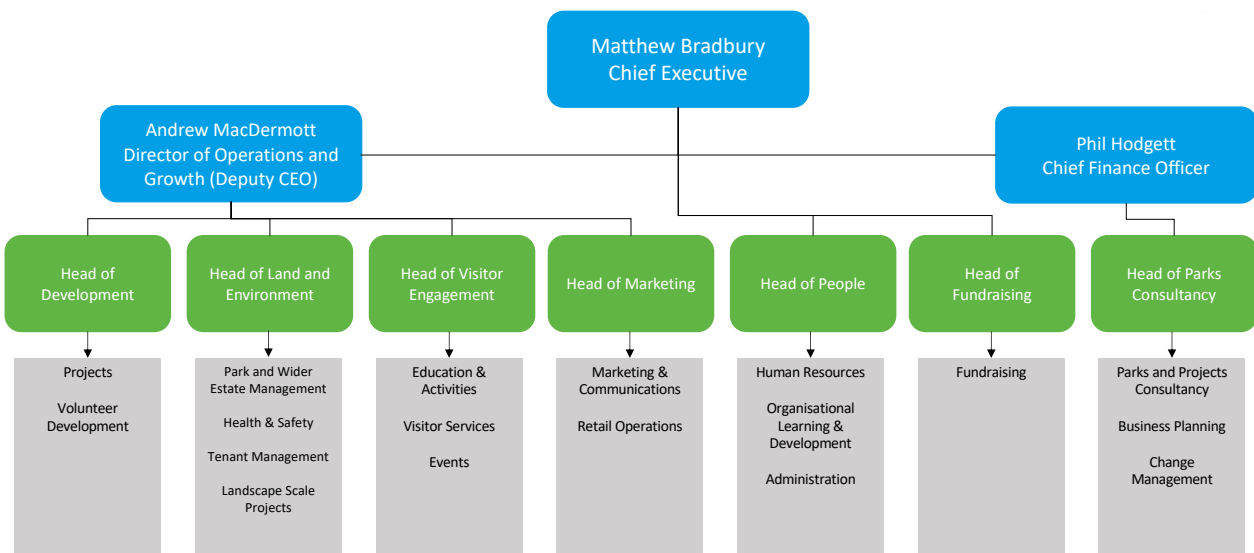
- We welcomed over 6,000 children on our environmental education programmes
- Our energetic and enthusiastic volunteer team clocked up an incredible 12,000 hours
- Over 32,000 people had fun in and on our water craft
- Our 'Peterborough Celebrates' community festival welcomed well over 23,000 visitors
- Over 5,000 people attended our Lottery Funded 'Your Community Greenspace' events
- Peterborough Presents, devoted to the Arts, engaged with 56,500 audience members
- We splashed out on an additional 180 hectares of impact generating landscape

OUR IMPRESSIVE VISION

We envision Nene Park as the crown jewel of the region, a sanctuary for heritage, culture and wildlife, and a playground offering diverse recreational activities for all the people of Peterborough, and beyond. We believe that it has never been more important for true wellbeing and the environment to provide access to welcoming and 'rich' spaces and places that connect people with nature and culture.

In collaboration with our partners and the vibrant communities of Peterborough, we have crafted an ambitious and progressive Nene Park 'Master Plan'. This visionary blueprint, which takes us well beyond our historic boundaries, tackles a spectrum of challenges and opportunities, guiding our journey towards a vibrant future. Please dive into the details of our exciting plans at www.nenepark.org.uk/strategy-and-policies.

OUR GROUP STRUCTURE



MEET OUR ILLUSTRIOUS BOARD OF TRUSTEES

The Trust thrives under the stewardship of a dynamic and committed Board of Trustees. Learn more at www.nenepark.org.uk/Trustees

A PROMISE OF INCLUSIVITY AND DIVERSITY

We believe in the transformative power of diversity. Each member of the Nene Park Trust family enriches our identity with their unique life experiences. We wholeheartedly welcome applications from anyone regardless of race, religion, gender, sexual orientation, age, or disability. If our mission ignites a spark within you, please connect!

MORE ABOUT US

To read more please visit www.nenepark.org.uk



A CALL TO LEAD, INSPIRE AND TRANSFORM

THE BOARD (THE FORMALITIES)

At the helm of our organisation, the Chair will lead the Board intelligently and flexibly in its responsibilities for delivering good governance and achieving strategic excellence. We ask that the Chair fosters a culture of collaboration, innovation, and accountability.

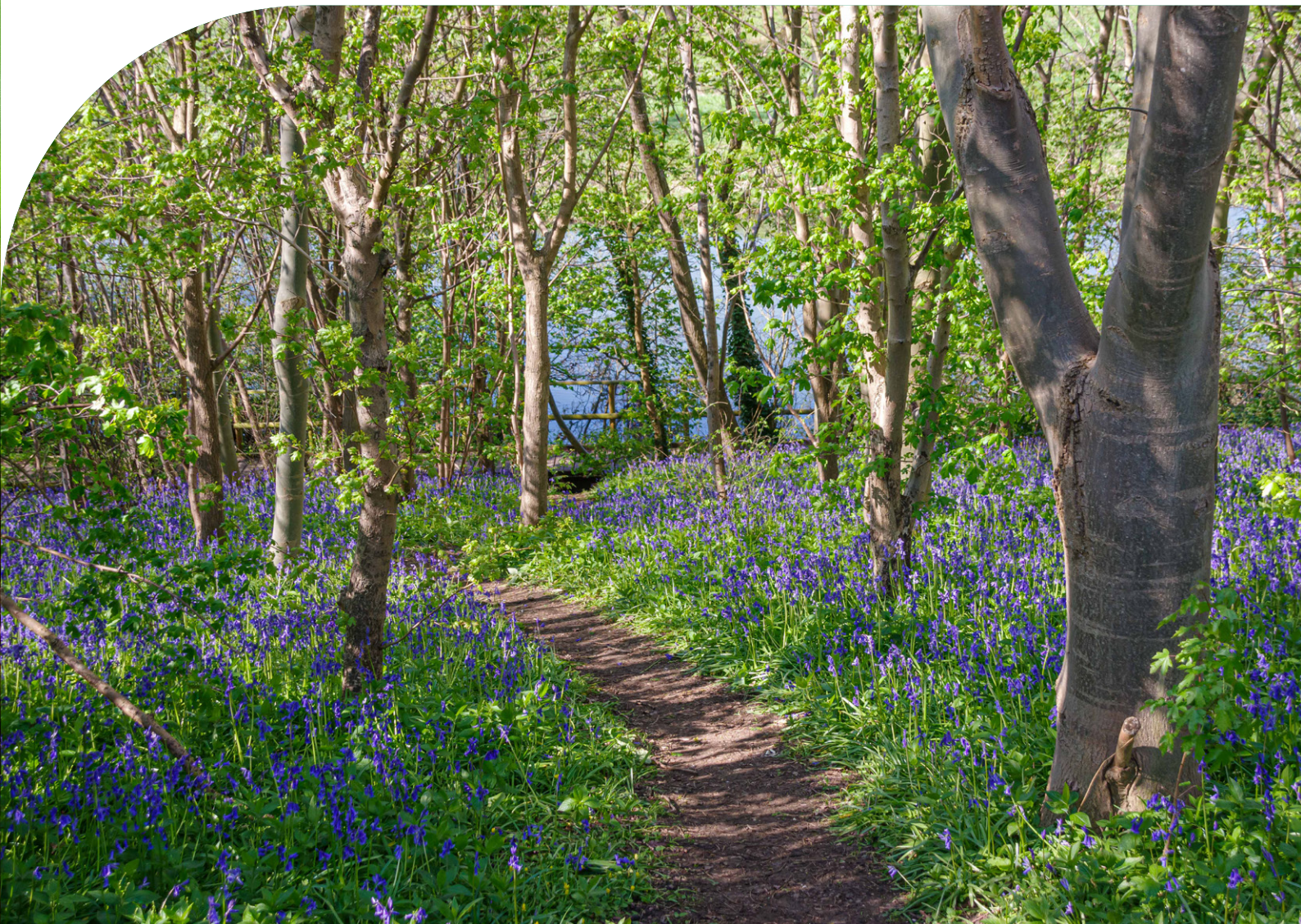
Within these responsibilities the Chair will ensure that the organisation complies with its governing document and relevant legislation, and provides solid support to the Chief Executive acting both as a critical friend and a key source of professional support.

The Chair will also work in partnership with the Chief Executive to be an ambassador and public face of the charity.

The Board is structured with a number of sub-committees, the most active of which is the Finance Committee, chaired by one of the Trustees. The Deputy Chair provides support and capacity to the Chair as needed.

YOUR QUEST:

- To navigate strategic waters, ensuring the Board charts a course aligned with our exciting aspirations and objectives
- To foster a culture of governance excellence, nurturing the collective wisdom of our Trustees both in Board meetings and through all interactions
- To champion our cause, weaving bonds with stakeholders, and representing our mission far and wide
- To cultivate a robust partnership with our Chief Executive, to ensure the realisation of our shared vision



WHO WE ARE LOOKING FOR

We are looking for a new Chair who recognises the significance of this role. We seek someone who will bring progressive leadership, commercial awareness, and a full complement of skills, abilities and ideas!

COULD IT BE YOU?

- Can you carve out time for a role that can be fast passed and demanding (yet utterly fulfilling)?
- Is your commercial acumen broad enough to cope with our multi-faceted, multi-functional and multi-modal approach to impact and sustainability?
- Are you as passionate as we are about the vital impact that spaces and places can have on the environment, on people and on the local economy?
- Are you good at genuinely connecting with funders, partners and those we are here to support?
- Can you rise above the busy 'day-to-day' and take that 'helicopter view' when it comes to working with the Executive Team?

IN ADDITION, DO YOU HAVE:

- An outstanding personal and professional record of achievement, including relevant Board level experience
- Extensive expertise in operating with precision in strategic leadership
- A nuanced understanding of the intricacies of the charity sector and charity finance
- A knack for realigning focus back to the big picture
- A diplomatic finesse, tact, and a foundation of sound judgment
- An unwavering commitment to fostering inclusivity and accessibility across all aspects of diversity, equality, and inclusion



TERMS OF APPOINTMENT

REMUNERATION

This appointment is offered on a voluntary basis. All reasonable expenses incurred on Nene Park Trust business will be reimbursed.

TIME COMMITMENT

This role requires an average of 2.5 days per month with a high degree of flexibility as to how this time commitment is delivered. Full Board meetings are held four times per year, supplemented by Finance Committee meetings, occasional task and finish group meetings and an annual site visit to meet the wider team and see projects at first hand.

In addition to chairing the main Board meetings, the Chair is invited to attend Board sub-committee meetings such as the Finance Committee.

TERM OF APPOINTMENT

The Chair will serve a three-year term to be eligible for re-appointment for one additional term. There is the option to extend for a further year in exceptional circumstances. The additional year would be used to aid succession planning.

LOCATION

The Trust is based at Ham Farm House, Ham Lane, Peterborough PE2 5UU.

HOW TO APPLY

We very much hope you will consider becoming our next Chair. If you would like an initial conversation with our retained consultants, please contact Hilary.Clifford@starfishsearch.com who would be delighted to discuss the role in more detail with you. To make an application, please go to <https://starfishsearch.com/jobs/npt-chair-of-board/> and click on the apply now button, with the following prepared:

- your CV (no more than three sides)
- a supporting statement that sets out why this role interests and excites you and the specific qualities you believe you can bring to Nene Park Trust.

We would also be grateful if you would also complete the Equality and Diversity monitoring form on the online application process. This form is for monitoring purposes only and is not treated as part of your application.

Please also tell us about any dates when you are not available for interview.

Closing date:	Friday 24th May 2024
First stage conversations with Starfish:	w/c 10th June 2024
Agreement of the final shortlist:	mid June 2024
Informal conversation with the CEO / outgoing Chair:	late June 2024
Final panel interview event:	w/c 1st July 2024