



Abi Gbago

Chief Executive



Colin Ansell

Corporate Director of Adults & Health



Vik Verma (Interim)

Corporate Director of Children & Young People



Vicky Clark (Interim)

Corporate Director of Inclusive Economy & Housing



Aled Richards

Corporate Director of Environment & Sustainable Transport



Conrad Hall

Corporate Director of Resources (s151)

onesource
Shared Services with London Borough of Havering



Amit Shanker

**Asst. Chief Executive
Chief Digital Officer**



James Partis is temporarily covering the Chief Marketing Officer role

Vacant

Chief Marketing Officer



James Partis

**Asst. Chief Executive
Chief Transformation Officer**

Simon Reid (Acting)
Director of Commissioning for Health & Social Care

Ali Omar
Assistant Director for Improvement and Change

Jane Custance
Director of Planning & Development

Sheila Roberts
Director of Licensing & Regulation

Andrew Ireland
Director of Strategic Investment

Glyn Peach (Interim)
Director of Technology & Innovation

Ikramul Haque
Head of Digital, Data and Digital Democracy

Mohamed Hammoudan
Assistant Director of Resident Engagement & Participation

Alice Granville
Assistant Director of Improvement & Change

Tony Jobling
Director of Operations (Adults)

Dave Tapsell
Director of Clinical Practice

Darren Levy
Director of Housing

Gary Connors
Director of Community Safety

Giles Clarke
Director of Property

Julie Harris (Interim)
Director of HR & OD

Noel Hatch
Head of Policy, Scrutiny & Partnerships

Nohaila Alavi
Assistant Director of BSMI

Jason Strelitz
Director of Public Health

Emma Cockerell
Director of Children's Social Care, Family Help and Safeguarding

Darren Mackin
Director of Community Wealth Building

Jamie Cooke
Director of Highways, Transportation and Parking

Andrew Ward
Assistant Director of Finance & Transformation (Dep. s151)

Sarah Bryant
Director of Exchequer & Transactional Services

Maxine McKenzie (Interim)
Assistant Director - Brand & Marketing

Henrietta Curzon
Head of Service Design and Insight

Claire Solley
Director of Quality Assurance, Safeguarding & Workforce Development

Annabel Bates
Director of Education, Inclusion & Achievement

Vacant
Director of Culture

Beau Stanford Francis
Director of Public Realm

Nicola Wood
Chief Internal Auditor

Vacant
Director of Procurement

Ashley Wilcox
Assistant Director - External Affairs

Vacant
Assistant Director of Resident Experience, Operations & Resolution

Charlotte Taylor
Director of Improvement, Change and Control

Victor Cook
Assistant Director of Quality Assurance

Robert Clarke (Acting)
Assistant Director of Environmental Transformation

Kirk Dede (Fixed Term)
Director of Corporate Business & Governance

Mark Butler
Director of Asset Management

Christina Pace
Director of Children's Commissioning and Universal Services

Jacob Heitland
Director of Climate Action

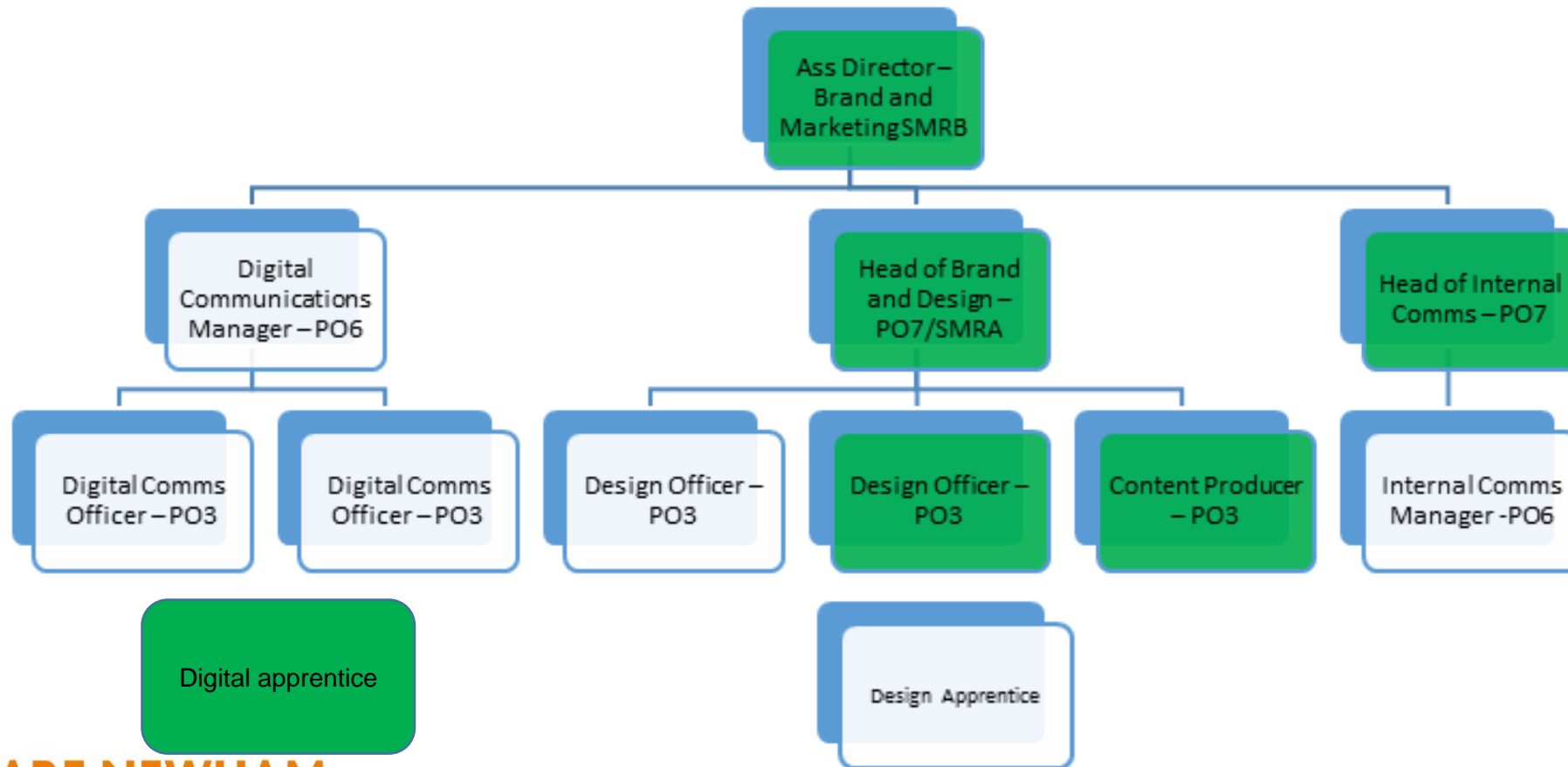
Satish Mistry (Interim)
Director of Legal & Governance (Monitoring Officer)

Ashley Noriega
Head of Mayor's Office

Isabel Barnes
Strategic Advisor to the Mayor

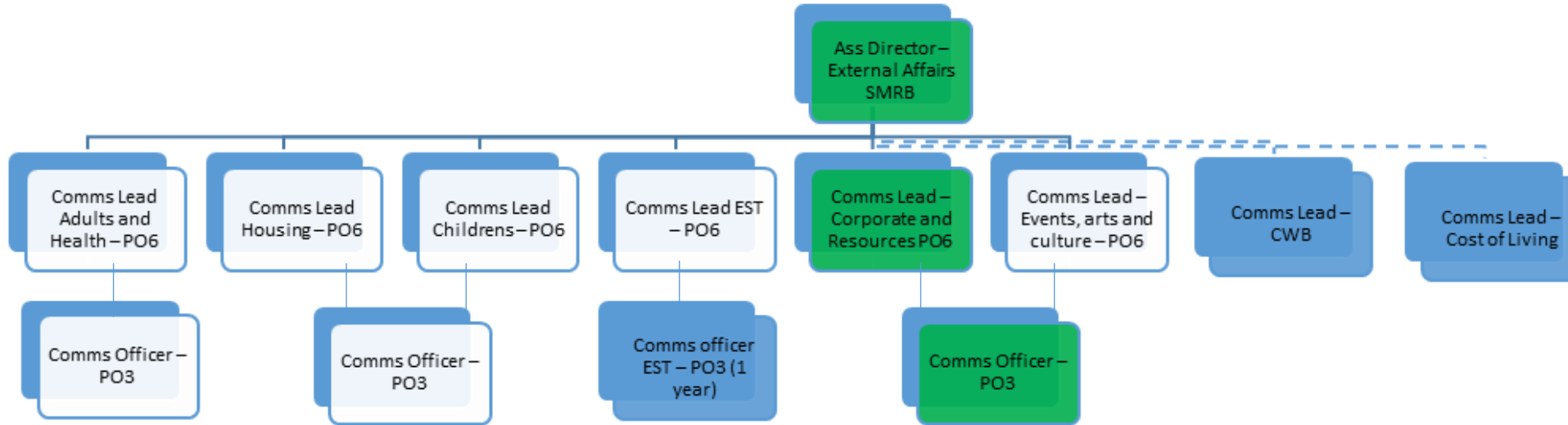
Karen Whelan (Interim)
Chief of Staff to the Mayor

Brand and Marketing



WE ARE NEWHAM.

External Affairs



WE ARE NEWHAM.